

OFFSHORE AND ONSHORE EQUIPMENT CATALOG







## ABOUT US

**NERUM ENERGY LLC** is committed to providing the best quality services and products from U.S.A, Europe and Canada. We are constantly expanding our services in Geothermal, Oil and Gas drilling fields and Solar Power. In this industries we know time is money, and we completely understand the concept that is why we provide new technology and services that are cost- and time- effective and your company will require small expenditures of capital.

# CONTENT

## 1. BOP Equipment and Spare Parts

Pag. 06

- BOP Stack, Cameron® and Hydril® Style
- BOP RAMS
- BOP Rubers and Packers
- BOP Reacondition service and recertification

## 2. Mud Pump Equipment and Spare Parts

Pag. 08

- Mud Pump equipment National® and Gardner Denver® Style
- Suction and Discharge Modules
- Liners
- Valves, Seats, Springs & Inserts
- Pistons, Piston Replacement Rubber

## 3. Choke manifold Stations

Pag. 10

- Choke Valves , Gate Valves and Spare parts
- Accumulators
- Choke manifold Stations
- Control systems and spare parts
- Speciality Equipment
- Repair Services

## 4. Top Drives

Pag. 12

- Top drive Equipment, Tesco® and Varco®
- Top Drive Spare parts
  - Washpipe assembly, packing, spacers, nuts, rings and wrenches
  - Filters, elements and kits
  - Pumps and motors
  - Shafts, pins, bushings and bearings
  - Hydraulic Cylinder
  - Actuators
  - Pressure switches
  - Gears
  - Friction pads

## 5. Handling Tools

Pag. 14

- Manual Elevators
- Manual Slips
- Manual Tongs
- Safety Clamps
- Forged Elevators Links
- Electroweld links
- Spider Elevators
- Hinged Casing Spider
- Hidraulic Power Units
- Tubing spider
- Pick Up Laydown Machine
- Kelly Spinner
- Drill Collar Handling Lift Adapter (Beckett)

## 6. Power Tools

Pag. 18

- Iron Roughneck
- Power Slips
- Spinning Wrenches
- Rotary Tables
- Power Tools Spare parts

## 7. Welhead accesories

Pag. 20

- Adapter Spools
- Drilling Spools
- Spacer Spools
- DSA (Double Studded Adapters)
- Casing Heads
- Base Plates
- Tubing Heads

## 8. Drill String Accesories

Pag. 23

- Circulating Subs
- Crossover Subs
- Drillable Lifting Sub
- Drill Pipe Pup Joint
- Kelly Saver Sub
- Lift Nubin
- Kelly Valves
- Side Entry Saver Sub , Integral and Forged

## 9. Electric Equipment and Control

Pag. 26

- Electrical motors
- VDF and Soft Starters
- NEMA 4/4X Panelboards
- Motor Control Centers
- Explosion Starters / Combo Starters
- Explosion Circuit Breakers / Disconnects
- Switchracks
- Ligthing
- Pligs, Receptacles and Fittings
- Electric Wire rope and Marine Cables

## 10. Drilling Pipe and Casing

Pag. 29

- Drill Pipe
- Casing

## 11. Shale Shakers, Pumps and Spare parts

Pag. 30

- EMSCO Pumps
- Mission Pumps
- Double diafragm Pumps
- Shale Shakers National® and M-I Swaco® Style.
- Spare Parts for Pumps an Shale Shakers



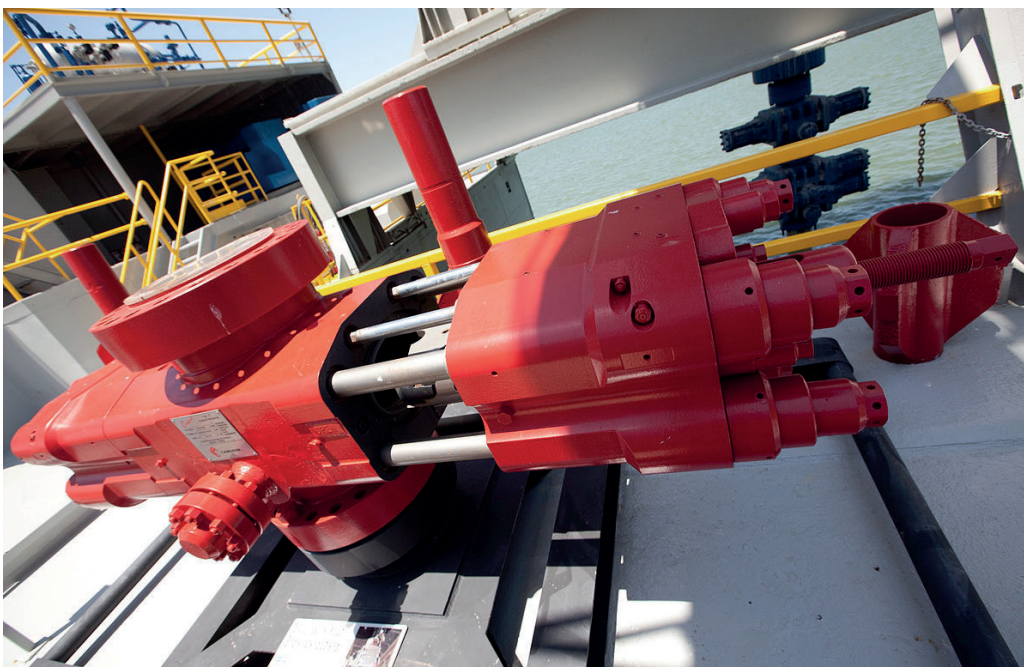
# BOP EQUIPMENT AND SPARE PARTS

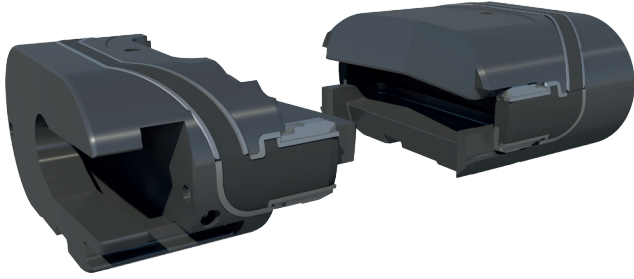
---

## BOP Stack , Cameron® and Hydril® Style

NERUM ENERGY offers the following BOP's for your oilfield equipment needs:

Spherical Annular/Annular Screw Head/MSP/Latch Head, Type U RAM BOP's from 7-1/16" 3,000 PSI W.P. TO 26-3/4" 3,000 PSI W.P."





## BOP RAMS

Brands carried include Cameron, Shaffer, Hydril, and High Quality alternative Brands. Rams come in 7 1/6 to 16 3/4 and 3000 to 10000 pressure ratings. These rams vary in size from 2 3/8" to 10 3/4". A large number of both Shaffer and Cameron Variable Bore Rams are in stock.

## BOP Rubers and Packers

- We can supply Pulsation Dampener Bladders
  - Type U Packers & Top Seals
  - Stripper Rubbers All Types
    - WSI Ram Packers
  - Flat & Split Dual Pipe Wipers
    - Oil Saver Rubbers
      - Shaffer Type
    - Spherical Packing Element
- Hydril Type MSP Packing Element and more



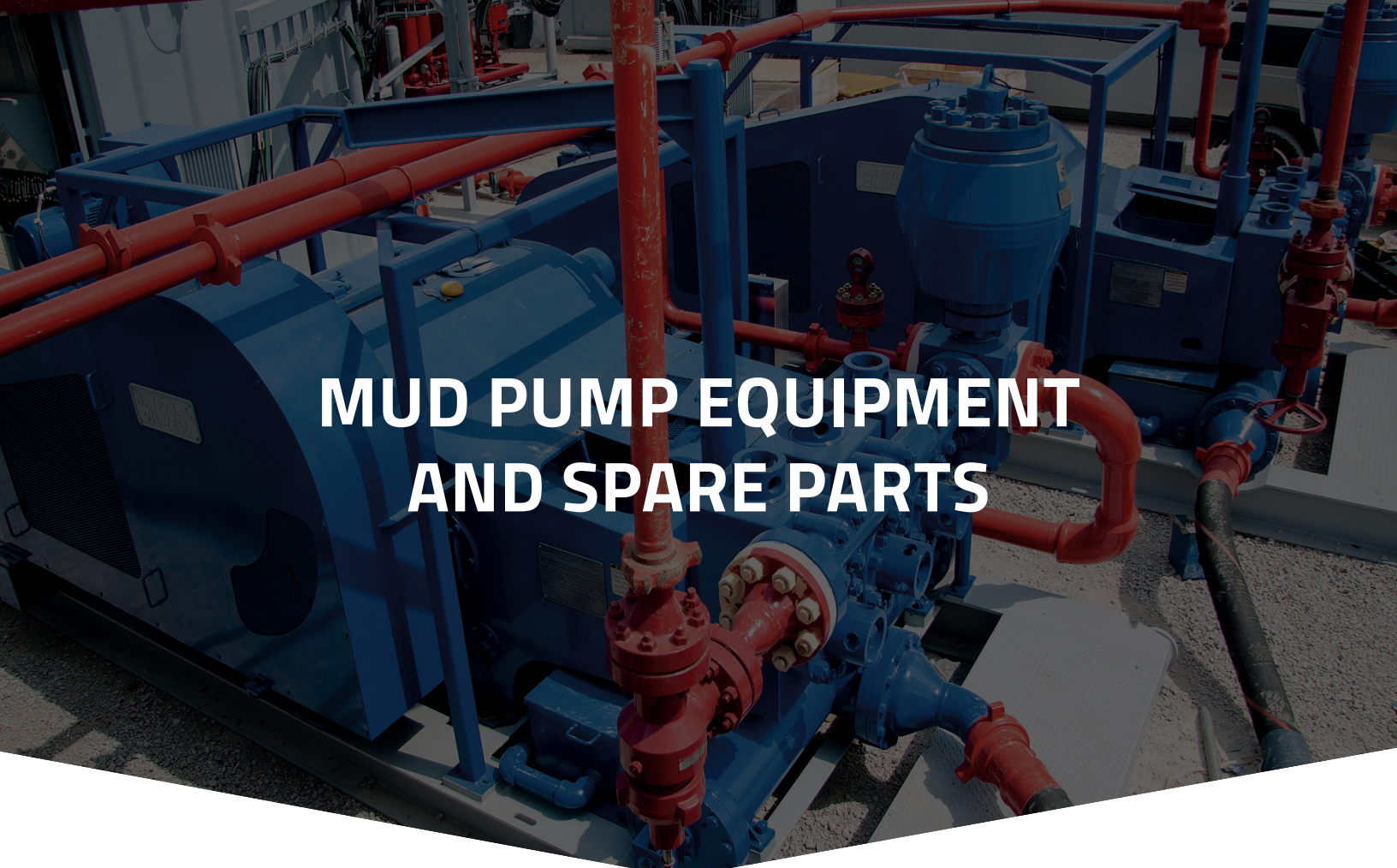
## BOP Reacondition service and recertification

We are committed to provide customer satisfaction. We do business with all the major OEM manufacturers and many other manufacturing facilities to ensure all the customer's requirements are met and they receive on-time delivery.

**NERUM ENERGY LLC** guarantees customer satisfaction with all equipment purchased.

Our services include the following:

- Testing
- Phosphating
- Shot Blasting
- NDE Testing
- Machining

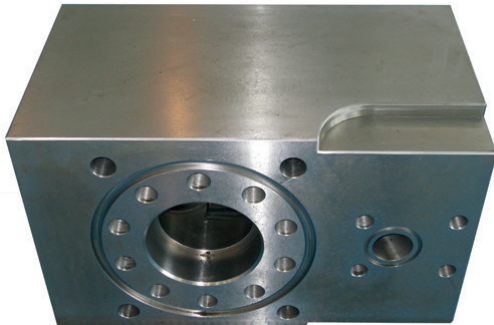
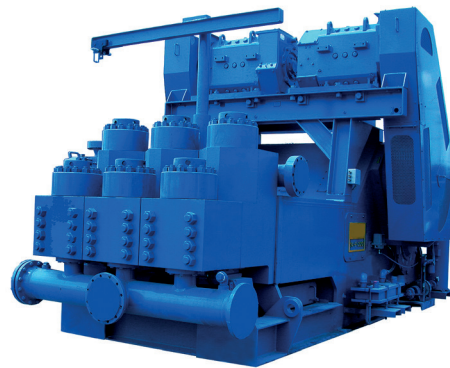


# MUD PUMP EQUIPMENT AND SPARE PARTS

---

## Mud Pump equipment National® and Gardner Denver® Style

**NERUM ENERGY** offers an extensive selection of quality new and used oil & gas drilling equipment, including mud pumps and parts to choose from at competitive prices. Contact us for your request of mud pumps and mud pump parts for sale at competitive rates.



---

## Suction and Discharge Modules

We have a complete line of interchangeable fluid end modules and accessories for triplex mud pumps. Fluid ends and components are interchangeable to OEM's such as National, Emsco, Gardner Denver, Bomco, Ideco and Oilwell. We offer both standard OEM style replacement parts and Two piece "L" Shaped fluid ends. Manufactured to the highest quality, our products offer the best performance and durability. 5000psi & 7500psi available.

# Liners

We supply API certified zirconia mud pump ceramic liners.

EMSCO	F-1000	F-1300	FA-1300	F1600	FB-1300	FB-1600	F-350	F-500	F-650
	F-800	D-375	D-700	DB-550					
IDECO	T-500	T-800	T-1000	T-1300	T-1600				
GARNDER-DENVER	PZ-7	PZ-8	PZ-9	PZ-10	PZ-11	PZ-L	PZ-8	PAH	FY-FX
	FO-FXD	FD-FXX	FG-GXG						
NATIONALOILWELL	10-P-130	12-P-160	8-P-80	7-P-50	K-700	K-700A	K-500	K-500	k-380
	A1700-PT	A1400-PT	A1100-PT	220P	218P	A850-PT	A350-PT	JWS	



# Valves, Seats, Springs & Inserts

NERUM ENERGY Offers High Performance Valves and seats containing the following features :

- Forged alloy steel AISI 4119 construction
- Heavy-duty valve design
- Deep carburized wear surfaces
- Heavy-duty durable retainer threads
- Taper post-heat treat machined to eliminate distortion
- Precise machined to API standards
- Available in sizes to fit all major mud pumps
- Expansive range of valves and seats
- Premium cross arms valves and seats
- Long-life valves

We offer additional products for requirements met by hardened or stainless Steel valves, including elastomer-insert valve seats.



# Pistons, Piston Replacement Rubber

We distribute Pistons made to precise tolerances and include a variety of materials yielding extended service life.



Piston:	Rubber	Blue Lightning	Green Bonded	Urethane HT High-Temp	Higt-Temp	Dual-Hardness
Material:	AISI 5140 Buna-N Rubber	AISI 5140 Polyurethane	AISI 5104 Urethane 711	AISI 5140 Polyurethane	AISI 5140 Polyurethane	AISI 5140 Dual Urethane
Hardness:	HB285-341 85+/-5	HB285-341 90+/-5	HB285-341 90+/-5	HB285-341 90+/-5	HB285-341 90+/-5	HB285-341 90+/-5
Normal Service: Life Time (Hr):	200	1000	1000	1000	1000	1000
Operating Pressure (Max. Psi)	5000	7500	7500	7500	7500	7500
Temperature:	32-175 °F	20-220 °F	220-250 °F	220-300 °F	20-325 °F	20-200 °F
PH. (Normal.):	7.5-10.2	7.5-10.2	7.5-10.2	7.5-10.2	7.5-10.2	7.5-10.2
Hydrogen Sulfide (Max.) ppm	22	22	22	22	22	22
Sand Solids (Normal):	0.21% Oil Based and Oil Emulsion	0.21% Oil Based and Oil Emulsion	0.21% Oil Based and Oil Emulsion	0.21% Oil Based and Oil Emulsion	0.21% Oil Based and Oil Emulsion	0.21% Oil Based and Oil Emulsion

# CHOKE MANIFOLD STATIONS



www.jef



## Choke Valves , Gate Valves and Spare parts

Needle and seat design provide for fully adjustable flow

- Adjustable models easily adaptable to positive configurations.
- Needle and seat available in standard or super trim.
- Interchangeable with Cameron 'H2' style chokes.
- Thumbscrew secures stem position at any setting.
- InconelTrim Gate Valves for Drilling & Production
- Manual and Hydraulic
- Pressures up to 15,000 PSI for Various Sizes
- Meets or Exceeds API 6A Standards & NACE MR-01-75
- Internal parts are completely interchangeable with OEM

## Accumulators

Accumulator Bottle Racks of any size and configuration that you may require to give you the additional auxiliary accumulator volume for your existing BOP Control System. All arranged on an Oilfield Skid with Lifting Eyes and Fork Lift Slots.



## Choke manifold Stations

The choke manifold is used to control well kick and well pressure. The operator can control the open/close angle of the choke valve to control the casing pressure, keeping the balance of downhole pressure or making it a little above the surface pressure to avoid overflow or blowout.

We can provide customized choke manifold depending on customers' requirements.



## Control systems and spare parts

BOP Control Systems in numerous variations for Surface Drilling and Work-Over applications. All of our BOP Accumulator Control Systems are designed to meet or exceed API 16D specifications. Our BOP Control Systems are manufactured in the USA and constructed of USA Koomey Type Parts.

## Speciality Equipment

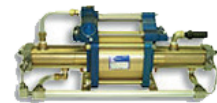
We can provide Specialty Equipment to your specifications.

Slip Joint Control Panels, Hot Line Control Panels, and Nitrogen Charging Manifolds are a few examples of Specialty Equipment.

Hydraulic Pumps



Gas Boosters



Air Boosters



Power Units



## Repair Services

Please contact us with your request for accumulators, control systems and specialty equipment repair, we have a professional team and a wide range of experienced process to recover your used or damaged equipment.

# TOP DRIVES



## Top drive Equipment,

### Tesco® and Varco®

**NERUM ENERGY** offers prospective buyers an extensive selection of quality new and used oilfield drilling equipment, including used and reaconditioned Top Drives to choose from at competitive prices and different brands.

All of our top drives have been recertified to ensure they are working properly.

Recertification includes the drive unit, track, vfd, panel, and a new loop kit. These top drives come with a complete dyno, FAT, and databook. All in accordance with API RP 8B.

During refurbishment, parts that are not fully functional are replaced with new ones. The result is a top drive that is as good as new but comes with a much better price



## Top Drive Spare parts

We can Provide a large inventory of replacement parts for major drilling equipment manufacturers. Please send us your inquiry and we will be glad to help you.

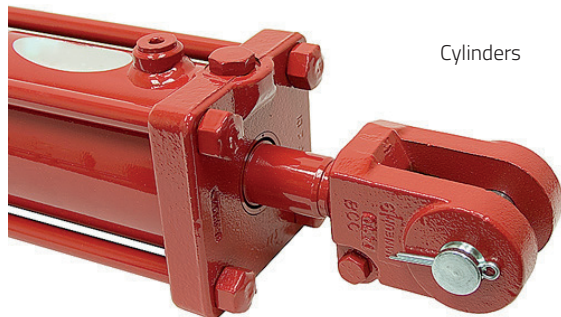
- Washpipe assembly, packing, spacers, nuts, rings and wrenches
- Filters, elements and kits
- Pumps and motors
- Shafts, pins, bushings and bearings
- Cylinders
- Actuators
- Pressureswitches
- Gears
- Friction pads



Pumps and motors



Shafts, pins, bushings and bearings



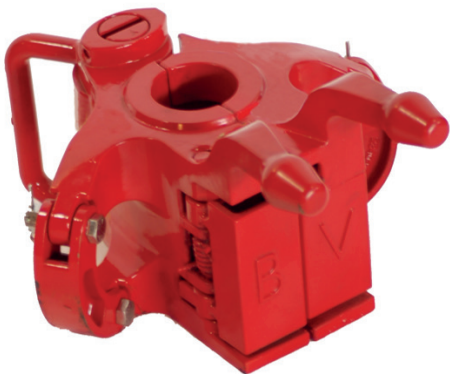
Cylinders



Gears



# HANDLING TOOLS



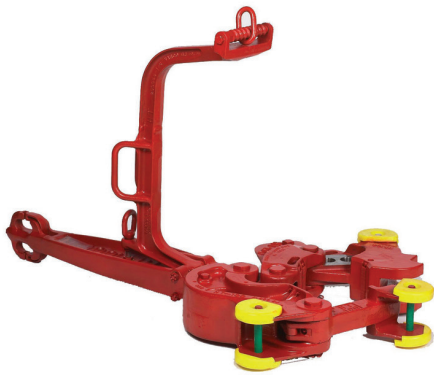
## Manual Elevators

Center latch elevators are used for handling plain, upset tubing, drill collar, and casing with square shoulder. These elevators feature a safety double latch system to reduce accidental opening. The Center Latch Elevators come in sizes ranging from 1.05" through 8 5/8", with capacity of 35, 65, 100, 150, 175, 250 and 350 tons. These elevators are made from alloy steel; load tested and are magnetic particle inspected. Certified to API 8C.

## Manual Slips

SDS, SDML, SDXL and SDHL Rotary Slips are for use in API standard insert bowls. Featuring better contact and distribution of load on drill pipe thru a superior wraparound configuration and unique insert design, these slips prevent bottlenecks and gouging damage. The buttress design of the body segments provides great strength while minimizing weight for ease of handling.



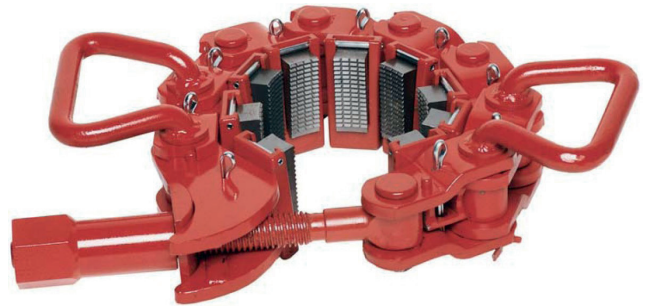


## Manual Tongs

The Type "C" Tong covers drill pipe or casing sizes from 2 3/8" through 10 3/4" OD and is mostly used on smaller rigs. The new rugged latch design makes the "C" Tong stronger than other models and also can be ordered with an optional 30 7/8" lever, where space is a problem. The tong is made from alloy steel, heat treated and magnetic particle inspected. All specifications are certified. We can offer B, DB,MS,LF AAX,H, and SDD Types.

## Safety Clamps

The Safety Clamps for tubing (T) and casing (C). Multipurpose (MP) safety clamps are adjustable to a variety of tubular. The clamp has its own box with a nut wrench and an allen wrench. Manual clamps are equipped with screw and nut combination. The nut secures the clamp around the pipe and should be tightened with the supplied nut wrench. The clamp grips uniformly by design. The individual links give the clamp flexibility to wrap around the pipe and the inserts are spring loaded.



## Forged Elevators Links

Work over link 150 ton length range from 36 in. To 144 in

## Electroweld links

Electroweld (perfection type) links (custom sizes on request)



## Spider Elevators

The Casing Spiders and/ Elevators are time tested designs made in USA factory of high quality alloy steel. They are 100% load tested and MPI inspected and certified to API 8C specifications. They are all "clam shell" designs so that by removing one hinge pin the unit can be opened to easily install it on or remove it from an in place string

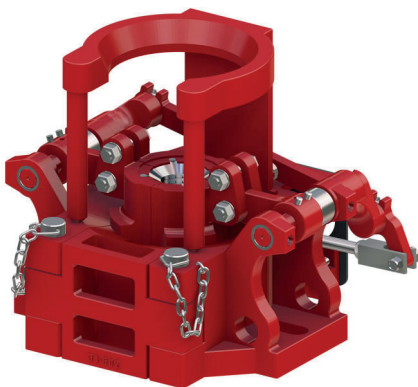
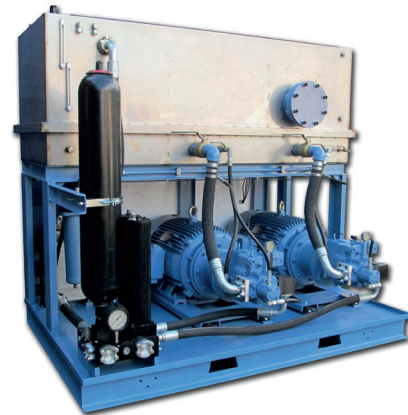


## Hinged Casing Spider

Hinged casing spiders and bushings are well suited to use where casing needs to be run through a rotary table or where no rotary table is in place. They can sip on the rig floor or be supported by cribbing. With our range of sizes they can be used with most sizes of casing. All bores, except the internal bore of the 8 5/8", are 3" per foot tapers to use UC-3 or other 3" taper slips. The 8 5/8" is 4" per foot taper to be used with API standard smaller slips. We build our Hinged Casing Spiders in either 200 ton or 250 ton ratings

## Hidraulic Power Units

**NERUM ENERGY** provide Diesel or Electric powered hydraulic power units to customer specifications. They can be built with the top storage bin for hoses and accessories, they can have dual diesel engines. DIESEL or ELECTRIC – BUILT TO SPECIFICATIONSSINGLEENGINE,OPTIONALDUALENGINEANDTOOLBINSHOWN



## Tubing spider

Tubing Spiders are manual / pneumatic spiders with slips that accommodate tubing sizes from 1.315" to 5 1/2". They can be operated by the remote foot valve, eliminating the need for lifting and setting manual slips while tripping the string. The Inverted model is specifically designed to used in snubbing operations. They are available in 83 Ton and 125 Ton versions. Construction is of quality Alloy steel to provide long life and safe operation

---

## Catwalk (Pick Up Laydown Machine)

The Pickup laydown machine with the following feature , Skid type and trailer mounted, designed for work over rigs, length 39 ft., width -40 in height lowered 36" Lifting capacity Range 2 & 3 pipe 2 3/8" Tubing to 7 5/8" Casing maximum lifting capacity 2500 lbs. Ability to reach rig floor 6 to 27" 8" Boom extensions (stinger) – 8 feet, 30 foot trough with 26 feet of pipe pusher capacity. Available in wireless or manual valve configuration.



---

## Kelly Spinner

Kelly Spinner allows the pipe to be spun on or off the connection without the use of dangerous spinning chains. Available in both Pneumatic and Hydraulic models.

---

## Drill Collar Handling Lift Adapter (Beckett)

The Lift Becket and Perfection Links reduces handling time when combined with a drill collar elevator. When pulling drill collar, the regular drill pipe elevator is connected to the upper part of the upset sections of Drill Collar Lift Becket.



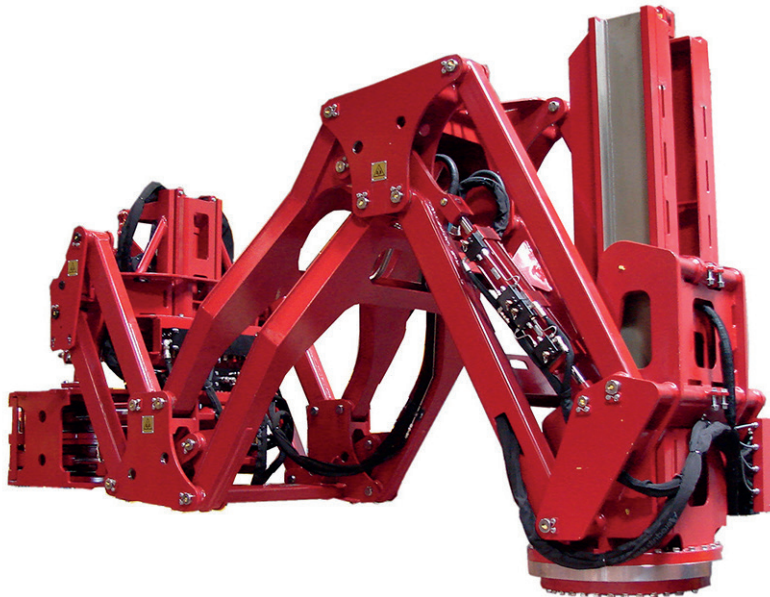


# POWER TOOLS

---

## Iron Roughneck

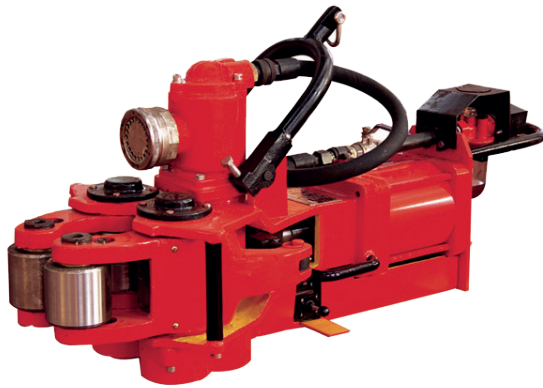
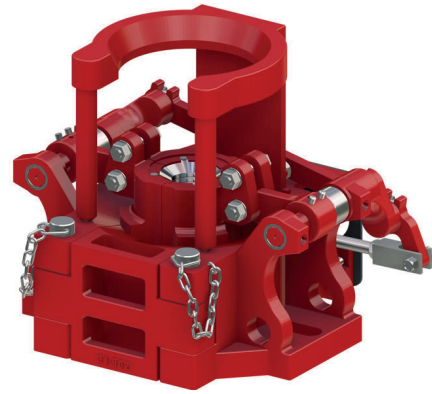
The Iron roughneck is one safe, cost-efficient equipment to maximize the efficiency of pipe handling operations by providing integrated spinning and torque making capabilities into a single machine. The iron roughneck greatly increases safety on both drilling operation and personal safety of the crew. Through the use of advanced remote controls on the larger models, the iron roughneck can be remotely operated and controlled to perform complete make/break cycles, providing increased levels of automation of the drilling rig.



---

## Power Slips

We can supply Power Slips Lifter in different models, installed with Master Bushing or Casing Bushing that works as a lifter to hold drill pipe slips, drill collar slips or casing slips. Lifter pushes the slip up & down in the Rotary Table to hold and release slips from tubular. It is controlled with the help of a foot valve.



---

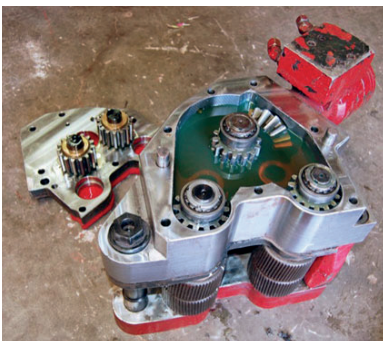
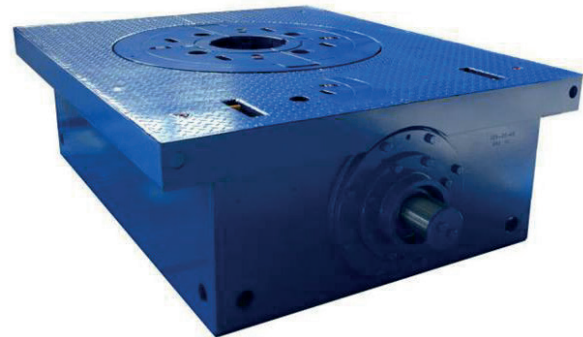
## Spinning Wrenches

Spinning wrench is the best replacement of rotary rope (or chain) for the mechanized spinning operation. The applicable range of pipe diameter is wide, and it can be freely adjusted whenever necessary. There are two driving and controlling styles for such spinning wrench: pneumatic and hydraulic. The spinning wrench is designed and manufactured according to API Spec 7K.

---

## Rotary Tables

**NERUM ENERGY** offers a wide range of Rotary Tables that range from 17-12" to 37-12" this tables meet or exceed the quality certifications and are made or remanufactured in USA.



---

## Power Tools Spare parts

Depending your need, Nerum Energy will provide a full line of OEM and alternative spare parts for your Power tool equipment.



# WELLHEAD ACCESORIES

Wellhead and Christmas Tree Equipment serves as important equipment in oil & gas production, composed of three parts including casing head, tubing head and Christmas tree. It is designed to connect casing and tubing, seal off the annulus between casing layers and between casing and tubing, adjust the pressure and outflow of production oil & gas wells, also applicable in special operations such as acidizing, fracturing, water flooding and testing



## Adapter Spools

The **Adapter Spool** is provided in every size and pressure rating.

Our Adapter Spools with minimum length to provide adequate working space.

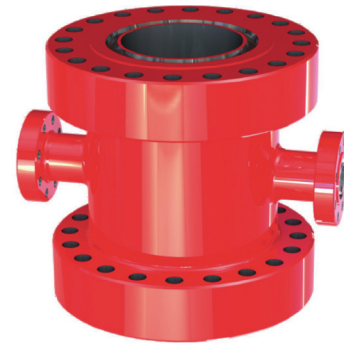
All Adapter Spools are manufactured per API 6A specs from 4130 H2S 75K material.

## Drilling Spools

**Drilling Spools** are the parts which are often used in the oilfield when drilling. Drilling spools are designed to allow safe circulation of mud. Drilling spools usually have the same nominal end connections and the same nominal side outlet connections.

When ordering, please specify:

- Working Pressure
- Type of top & bottom Connection
  - Type of side Connection
  - Length or height
  - Material Class



## Spacer Spools

**NERUM ENERGY** Offers a wide range of sizes and capacities for spacer spools Key Features :

- Flanged, studded, and hubbed ends available, in any combination
- Manufactured for any combination of size and pressure ratings
- Spacer Spools designed to minimize length while allowing sufficient clearance for wrenches or clamps, unless otherwise specified by the customer
- The standard design for Spacer Spools does not include outlets, although outlets can be added as specified
- Available for general service and sour service in compliance with any temperature rating and material requirements specified in API specification 6A
- Available with Stainless Steel 316L or Inconel 625 corrosion resistant alloy ring grooves Tap-end studs and nuts are normally provided with studded end connection

## DSA (Double Studed Adapters)

DSA's are a combination of flanges of different sizes and pressure ratings.

DSA is normally supplied along with appropriate size of studs with nuts duly fitted.

Adapter Flanges are used for transition in nominal size and/or pressure rating and where there is a restriction of space in the drill string.

They provide an ideal solution by hooking up two different equipments of different size and pressure rating. DSA's are available as per customer specified thicknesses, consistent with design considerations



## Casing Heads

The lowest part of the wellhead that is almost always connected to the surface casing string, and provides a means of suspending and packing off the next casing string.

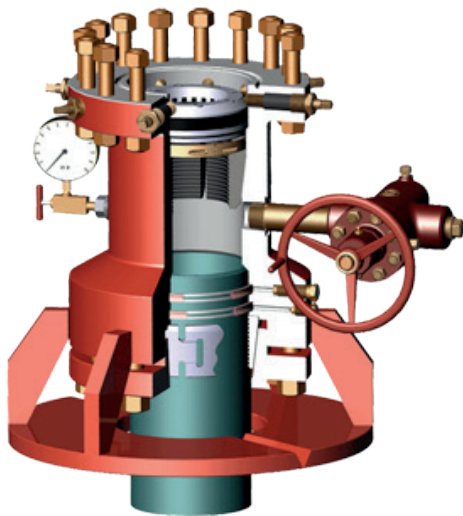
Providing attachment to the surface casing string through the type of bottom connection (Slip-on-weld, threaded, Sliploc), the casing head is typically qualified to withstand up to 10,000 psi working pressure. It suspends the casing and packs off the next casing string while providing annular outlets, as well as supporting the BOP while drilling the remaining stages.



## Base Plates

A load-supporting device attached to the starting casing head by means of either mechanical or permanent (welding) connection.

Designed to support up to 2,000,000 pounds (907,105 kg), FMC's base plates fit almost all surface applications. Depending on your operation's needs, both detachable and non-detachable options are available. For standard applications, detachable base plates have the following available:



Baseplate Size	Current Load Capacity	Desired Load Capacity
11"	500,000 lbf vertical load	1,000,000 lbf vertical load
13 5/8"	750,000 lbf vertical load	1,500,000 lbf vertical load
16 3/4"	1,000,000 lbf vertical load	1,750,000 lbf vertical load
20 3/4" & 21 1/4"	1,000,000 lbf vertical load	2,000,000 lbf vertical load

## Tubing Heads

Equipment attached to the casing spool used to hang the tubing (smallest casing string) and seal the annulus between the tubing and casing.

The top spool on a wellhead assembly contains the highest pressure in the wellhead, and contains a load shoulder to hang the tubing hanger and tubing string. When the well is completed, the tree is installed on top of the head with a tubing head adapter. Providing a means to support and test the BOPs while completing the well, the tubing head is a necessary component when drilling and completing a well. The standard tubing head product line combines a straight-bore profile with a varied number of aligning pins, depending on the chosen model. FMC's tubing heads eliminate the "wedge-locking" of the bowl protector, BOP test plugs, and tubing hangers. As additional advantages, valve removal (VR) threads are standard on all flanged or studded tubing head outlets, and if a 9" or larger top flange is required, the C-29 casing hanger can be used for casing-type completions.



# DRILL STRING ACCESORIES

## Circulating Subs

The Circulating Sub is designed to run immediately above or below the BHA. Activation is accomplished by dropping the S.S. Ball from the surface and applying pump pressure. This causes the shear pins in the sub to shear, allowing the Sleeve to drop from its primary position to its secondary position, opening the two sub ports which divert the flow to the annulus.



Crossover Sub



Cross-over Sub  
Box to Box



Cross-over Sub  
Box to Pin



Cross-over Sub  
Pin to Pin

## Crossover Subs

A crossover sub is used to crossover from one connection size to another or as the disposable component used to extend the connection life of a more expensive drill stem member.

Crossover subs are available with:

- box x pin
- box x box or
- pin x pin connections.

Crossover Subs are manufactured from 4145M or 4140HT alloy steel. The connections are protected by a phosphate surface coating that minimizes galling on initial make-up.

## Drillable Lifting Sub

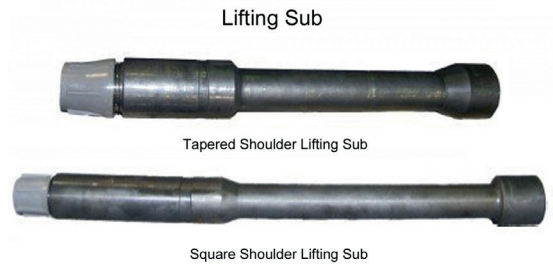
Drillable Lifting Subs are of one piece construction and manufactured from 4145M or 4140HT alloy steel. The Drillable Lifting Sub comes with an 18 degree tapered shoulder with a box up x pin down connection.

Available in all diameters and lengths.

When ordering, please specify:

- Drill Collar OD
- Tool Joint OD
- DrillPipeOD
- Bottom connection (pin end)
  - Top connection (box end)
  - Bore

Pressed or cast steel thread protectors



Square Shoulder Lifting Sub

## Drillable Pipe Pup Joints

Drillable Pup Joints are short sections of well tubing made to API standards. The Drill Pipe Pup Joints are machined from integral bars of 4145H MOD Q&T (chromium molybdenum, manganese modification) alloy steel quenched and tempered to a hardness range of 285- 341 BHN (drill collar specs) Drill Pipe Pup joints are available in 5 feet, 10 feet, 15 feet and 20 feet lengths and can be ordered to match standard drill pipe dimensions.

\*Welded pup joints are also available on request

When ordering, please specify:

- Overall length; 5 ft., 10 ft., 15 ft., 20 ft. or specific customer sizes
- Drill pipe OD
- Tool Joint OD
- Tapered or square shoulder
- Drill pipe connection size & type
- Bore
- Pressed or cast steel thread protectors



## Kelly Saver Sub

The Kelly Saver Sub is used to extend the life of the kelly by taking the connection wear each time it is made up to a drill stem component. The saver sub connection is sacrificed because it can be easily repaired or inexpensively replaced.

The Kelly Saver Sub can be equipped with a rubber or brass protector to reduce BOP equipment and casing wear resulting from contact damage with the lower kelly connection.





## Lift Nubbin

Lift nubbins are used for lifting tools and tubular products during manufacturing, shipping or at the rig site.

Lift nubbins are manufactured from steel castings with heavy-duty bails suitable for picking up and laying down all tools and tubulars.

All API connections are manufactured in accordance with API spec 7.

## Kelly Valves

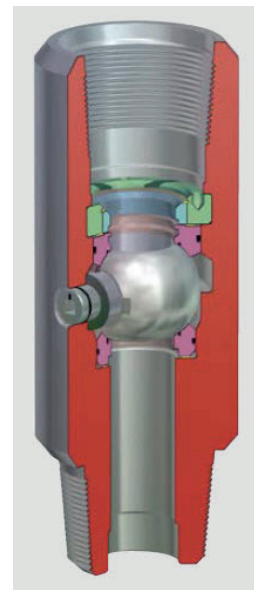
The Kelly Valve can be used as a drill pipe safety valve, Upper Kelly Valve, or Lower Kelly Valve.

As an Upper Kelly, the valve can be used to control blowout pressures by shutting off flow in the drill string at any time.

As a Lower Kelly, the valve can stop mud loss when the kelly is disconnected from the drill string.

Kelly Valves are manufactured from AISI 4140/4145 alloy steel and can be trimmed to standard or H2S.

The Kelly Valves can be provided as one or two piece construction.

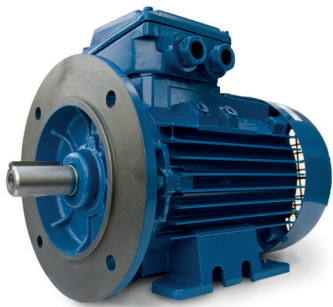


## Side Entry Saver Sub, Integral and Forged

Integral Side Entry subs are manufactured from 1 piece of AISI 4140/4145 alloy steel.

The side entry sub is manufactured with box by pin connections to match the drill pipe by an integral 2" 1502 union side outlet.

# ELECTRIC EQUIPMENT AND CONTROL



## Electrical motors

We distribute electric motors for industrial, commercial and agricultural applications. We offer these motors in various configurations and types whether you need a motor for a general purpose application or a severe duty process application we have you covered. We stock low voltage AC motors from one- third to 600 horsepower for quick delivery.

## VDF and Soft Starters

Choose Soft Starters for

### **CONTROLLED STARTING**

Acceleration time, torque and current limits, even slow speed jogging are all available Consistent, reliable electronic overload protection

### **LESS MAINTENANCE**

Reduce the torque surge when your motor starts and you reduce damage to bearings and couplings, gearboxes, chains, belts and pulleys Reduce water hammer in pipes, mechanical shock on conveyors and loads, and cavitation in pumps

### **LOWER PEAK CURRENT DEMAND**

Lower peak charges from the utility Smaller dips in line voltage Minimize stress on motor windings, especially in large motors



## NEMA 4/4X Panelboards

An ideal low voltage power distribution panel for harsh and corrosive applications. Built using our high quality, field-proven Ex-CELL enclosures, the XLPB Panelboard provides long product life, NEMA 4X protection, and easy installation

### FEATURES:

- Heavy duty welded mounting feet provide ease of installation (customer can easily support the panel with bottom mounting feet, while fastening the top feet)
- High quality foam-in-place gasket prevents ingress of water and corrosive agents, reducing panel failure due to moisture/corrosion
- An integral drainage channel allows for opening the panel door without moisture or dust seeping into panel from the top side of the enclosure
- An internal/external ground stud assembly enables rapid and reliable protective ground connection
- Industrial grade NEMA 4X panel designed for harsh environments provides long product life



## Motor Control Centers

Motor control centers & switchgear IEC type tested or UL certified

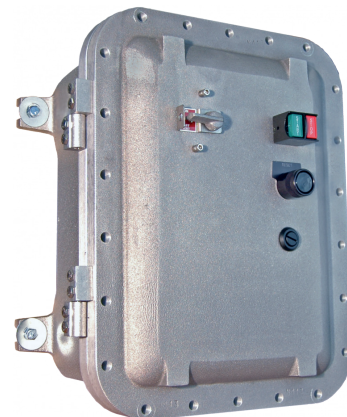
- Design Verification compliant with IEC/EN 61439-2
- Type Tested to comply with IEC/EN 60439-1
- Verified to UL 67, UL 508 A, UL 845 and UL 891
- Verified to CSA C22.2 No. 14-95, No. 31-M89, No. 29-M1989

New, after-market and factory discontinued equipment Refurbish and retrofit FD equipment with new components. Most manufacturers supported

- Main bus available up to 6300 Amps
- Construction and main bus bracing up to 120kA(1s)
- Enclosures available up to IP54 / UL Type 12
- Choose from multiple component manufacturers
- IEC or NEMA starter ratings
- Modular construction makes MCC units consistent; changes and additions in standardized sizes
- Wheels available for installation in tight spaces
- Integrated control console and desks available
- Laser cut and engraved door diagrams
- Nameplates made in-house to your specifications, including localized and multi-lingual designs

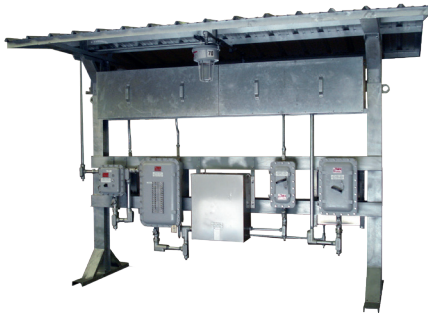
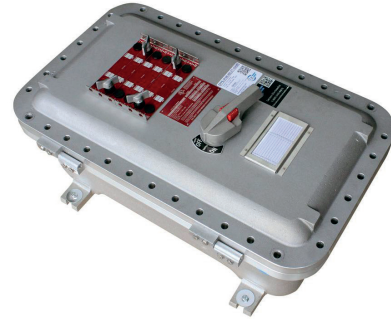
## Explosion Proof Starters / Combo Starters

These enclosures are designed so that the hot gases generated during an internal explosion are cooled below the ignition temperature of the surrounding flammable atmosphere as the gases are transmitted through the joints of the enclosure. Any parts which are not rated for hazardous area can be installed in these enclosures and then the assembly becomes rated. There are some exceptions apply, that which parts can't be installed in these enclosures.



## Explosion Proof Circuit Breakers / Disconnects

- Circuit breakers are thermal magnetic type and are available in frame sizes ranging from 15 to 800 amperes
- Also available as non-automatic circuit interrupters, without automatic overload trip elements for load switching and isolation.
- Short circuit and overload protection must be provided by separate protection device
- Breakers available for magnetic trip only
- Can be set up for GE, Cutler-Hammer (Westinghouse), Square-D and ITE (Siemens) brand circuit breakers. Consult factory for other brands
- Holes for Cutler-Hammer circuit breakers are drilled directly into back wall



## Switchracks

Providing free standing switchrack and switchgear assemblies that provide motor control and distribution assemblies in one complete package.

- Power bussing
- Lightpanels
- Weldingreceptacles
- Motor starters
- Drives, soft starters, plc's
- Instrumentations

## Lighting

we offer a wide range of products including explosion proof lighting, portable hazardous location lighting, high powered LED lights, hand held 12/24 Volt lighting, light towers and portable power distribution panels with large KVA transformers. Our products are used by manufacturing facilities, refineries, military bases, paint spray booths, oilfield operations, shipyards and food processing plants



## Plugs, Receptacles and Fittings

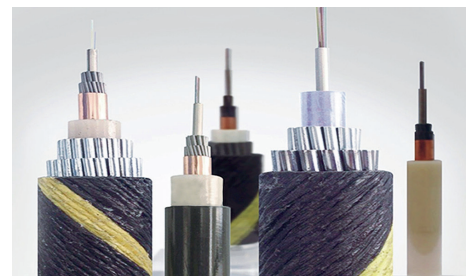
Explosion proof Plugs, Receptacles and Fittings are used:

- To supply power to portable electrical equipment such as hand lamps, lighting systems, power tools, conveyors, and welders
- In areas which are hazardous due to the presence of flammable vapors or gases and combustible dusts
- At petroleum refineries, chemical and petrochemical plants, and facilities for processing and handling grain, flour and starch



## Electric Wire rope and Marine Cables

We offer application-specific, multi-core cables for environments characterized by extreme temperatures, abusive handling, corrosive fluids, or mechanical stresses. With the ability to combine nearly any functional element under a single cable jacket, the result is a professionally engineered, economic, long-lasting cable to keep your job site running smoothly.





# DRILLING PIPE AND CASING

## Drill Pipe

Our Drill Pipe Distribution capability ranges from 2 3/8" to 6 5/8" Outer Diameter in steel grades E, X, G, S in range 1, Range2, & Range 3 lengths. Drill Pipes with Special Grade & Length are available on an individual orders.

Quality is guaranteed through every step in the manufacturing process according to ISO9001: 2008, API5DP & API Spec 7-1 all of our pducts are made in the USA.



## Casing

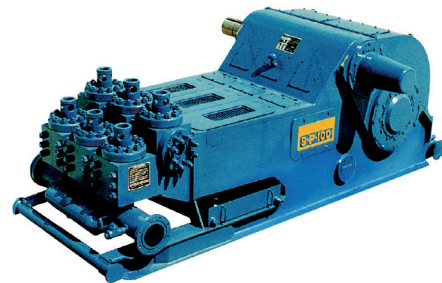
We Distribute steel pipe from 1 1/3" to 28" (outside diameters). Our casing and tubing pipes are manufactured according to API grades and also in proprietary grades including sour, high collapse, chrome and CRA products for special applications. Our proprietary grades allow us to offer the best solutions for each customer's particular well conditions.



# SHALE SHAKERS, PUMPS AND SPARE PARTS

## EMSCO Pumps

We offer F-series design mud pumps in horsepower ratings of 2,000hp, 1,600hp, 1,300hp, 1,000hp, 800hp, and 500hp. Based on the proven Continental Emsco design since the early 1970s, F-series mud pumps have been the preferred choice for land and offshore drillers worldwide.



## Mission Pumps

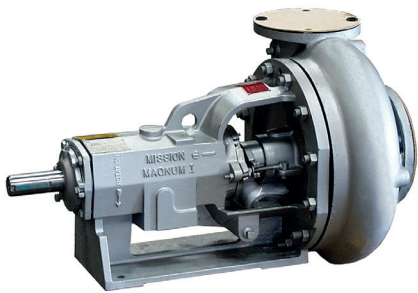
We offer a wide range of equipment OEM and alternative for the following:

Mission Centrifugal Pumps for Oil & Water Well Rigs

- Mission Magnum Pumps
- Mission type Centrifugal Pumps & Pump Parts
- Liquid Fertilizer Pumps
- Mission Pump Parts
- Motors
- Skid-mounted pump and Motor Fabrication
- All Centrifugal Pump Parts for Mission and Mission type Pumps, including
  - Mission Sandmaster Pumps
  - Mission Spacesaver Pumps

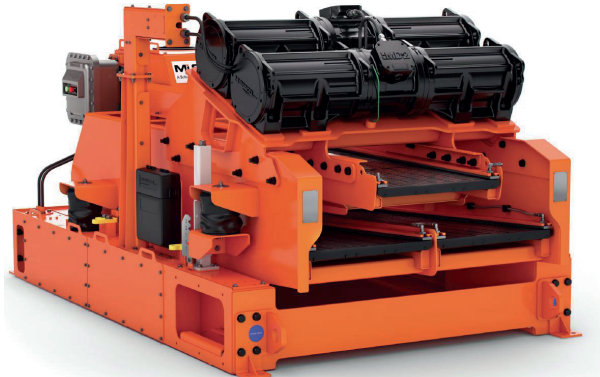
We can also provide rubber linings for your new or existing pump (for more information, [click here](#))

We'll also be glad to review and recommend installation details for the pumps and parts that we sell.



## Double diaphragm Pumps

Advanced performance Double Diaphragm pumps were specifically designed for maximum performance and efficiency. The bolted configuration of these pumps ensures total product containment while the redesigned liquid path reduces internal friction to maximize output and efficiency. A variety of elastomer options including Teflon® PTFE are available to meet abrasion, temperature, and chemical compatibility concerns.



## Shale Shakers National® and M-I Swaco® Style

We offer different solutions for solid control

- **FS300 Shale Shaker**

Features an adjustable single deck with 3 panel screens, loop isolators, 58.5 square feet of screen area, and a basket powered by two 2.5HP, 3-phase 230/460V 60Hz explosion proof Vimarc Vibrator motors.

- **Single Standard Shale Shaker**

SSS orbital motion, single deck shale shaker with hard rubber shock mounts, 20 square feet of screen area for 4' x 5' hook strip screens, and powered by a 5HP 3-phase 230/460V 60Hz explosion proof Vimarc Vibrator motor.

- **Dual Standard Shale Shaker**

DSS orbital motion, single deck shale shaker with hard rubber shock mounts, 40 square feet of screen area for 4' x 5' hook strip screens, powered by a 5HP 3-phase 230/460V 60Hz explosion proof Vimarc Vibrator motor.

- **Single Tandem Shale Shaker**

STS orbital motion single deck shale shaker with hard rubber shock mounts 40 square feet of screen area for 4' x 5' hook strip screens, flow back pan beneath upper screen, and powered by a 3HP 3-phase 230/460V 60Hz explosion proof Vimarc Vibrator motor.

- **Dual Tandem Shale Shaker**

DTS features two orbital motion tandem deck shakers, mounted on a common base with common possum belly deck shale shaker with hard rubber shock mounts, 80 square feet of screen area for 4' x 5' hook strip screens, flow back pan beneath upper screen, and powered by a 5HP 3-phase 230/460V 60Hz explosion proof Vimarc Vibrator motor.

- **Junior Standard Shale Shaker**

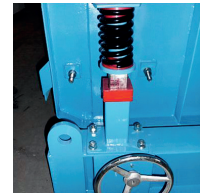
SSS orbital motion single deck shale shaker with hard rubber shock mounts, 9 square feet of screen area for 3' x 3' hook strip screens, powered by a 3HP 3-phase 230/460V 60Hz explosion proof Vimarc Vibrator motor.

- **Mud Cleaner/Conditioner System**

Features a FS300 linear-motion shale shaker with a variety of possible desilter/desander cone arrangements manifolded above the screen deck. Space saving model that can flow up to 1000/GPM.

## Spare Parts for Pumps and Shale Shakers

Shale shaker spare part including all regular wear parts including shaker screen, wedge or other type screen tighten parts, vibrator motor, shaker deck rubber, electrical control panel, etc. The spare parts storage and supply speed is very important for shaker user, many supplier even can't confirm their spare parts no. before measure the old parts. As the shale shaker is the most important part in a solids control system for screen separating of drilling mud. AIPU Solids Control is one of the professional suppliers for shaker spare parts, especial for replacement shaker screen of various brand shaker.





## CONTACT US

### DIRECTIONS

1790 HUGHES LANDING SUITE 400 BLVD,  
THE WOODLANDS , TX. 77380

PH. +1 281-655-3296

FAX. 281.655.3403

EMAIL: [customerservice@nerumenergy.com](mailto:customerservice@nerumenergy.com)

[www.nerumenergy.com](http://www.nerumenergy.com)



[www.nerumenergy.com](http://www.nerumenergy.com)